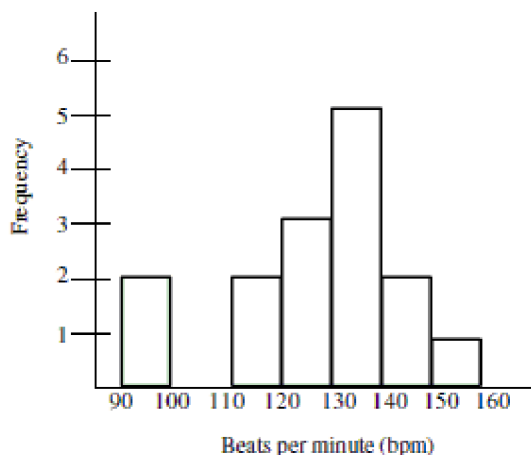


MULTIPLE CHOICE. Choose the one alternative that best completes the statement or answers the question.

A fitness instructor measured the heart rates of the participants in a yoga class at the conclusion of the class. The data is summarized in the histogram below. There were fifteen people who participated in the class between the ages of 25 and 45. Use the histogram to answer the question.

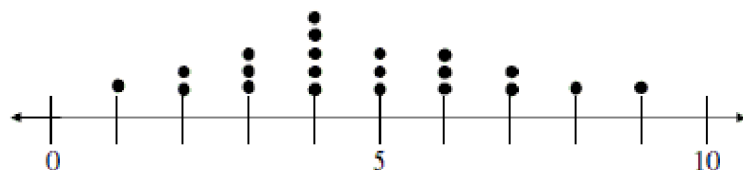


- 1) How many participants had a heart rate between 120 and 130 bpm? 1) _____
 A) 3 B) 4 C) 5 D) 2
- 2) How many participants had a heart rate between 140 and 150 bpm? 2) _____
 A) 4 B) 3 C) 5 D) 2
- 3) What percentage of the participants had a heart rate greater than 130 bpm? 3) _____
 A) 53% B) 13% C) 33% D) 27%
- 4) What is the approximate percentage of participants that had a heart rate less than 130 bpm? 4) _____
 A) 47% B) 13% C) 33% D) 53%

Solve the problem.

- 5) Each day for twenty days a record store owner counts the number of customers who purchase an album by a certain artist. The data and a dotplot of the data are shown below: 5) _____

Data set: 1, 3, 4, 4, 5, 6, 7, 2, 3, 4, 4, 5, 6, 8, 2, 3, 4, 5, 6, 7, 9



Which of the following statements can be made using the given information?

- A) On the first day of collecting data the record store owner had one person purchase an album by the artist.
- B) During the twenty days when the record store owner collected data, there were some days when no one purchased an album by the artist.
- C) The dotplot shows that this data has a roughly bell-shaped distribution.
- D) None of these

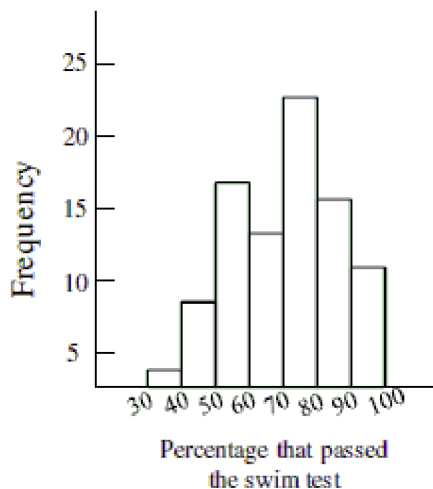
- 6) For twenty days a record store owner counts the number of customers who purchase an album by a certain artist. The data and a dotplot of the data are shown below: 6) _____

Data set: 1, 3, 4, 4, 5, 6, 7, 2, 3, 4, 4, 5, 6, 8, 2, 3, 4, 5, 6, 7, 9



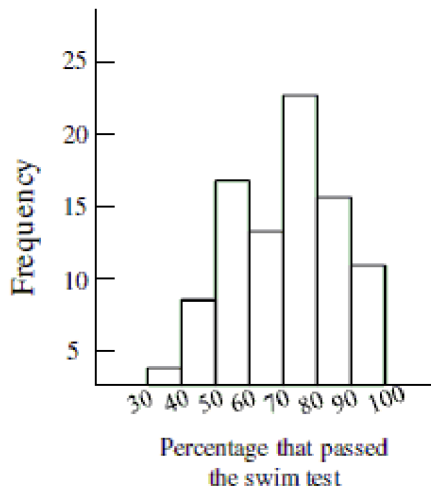
Which of the following statements can be made using the given information?

- A) The dotplot shows that this data has a roughly bell-shaped distribution.
 - B) On five of the twenty days observed by the record store owner, there were four albums by the artist purchased.
 - C) During the twenty days when the record store owner collected data, at least one album by the artist was purchased each day.
 - D) All of these
- 7) The histogram below shows the distribution of pass rates on a swimming test of all children who completed a four week summer swim course at the local YMCA. How many of the courses had a pass rate less than 40 percent? 7) _____



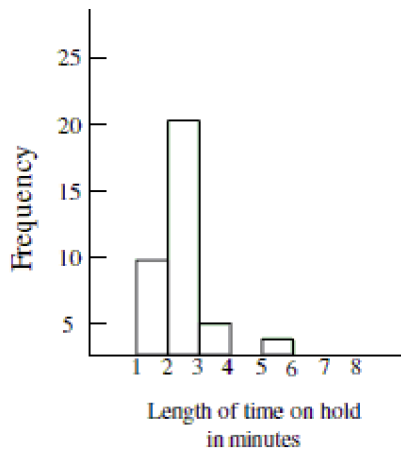
- A) Not enough information available
- B) About 8
- C) About 3
- D) About 5

- 8) The histogram below shows the distribution of pass rates on a swimming test taken by all children who completed a four week summer swim course at the local YMCA. What is the typical pass rate for the swim test? 8) _____



- A) Not enough information available
 B) About 95%
 C) About 55%
 D) About 75%

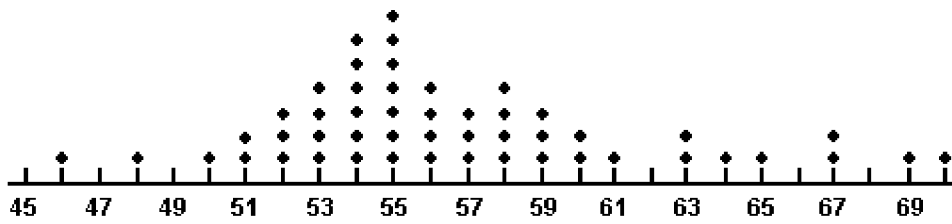
- 9) Based on the histogram below, would it be unusual to be on hold for 5 minutes or more at this call center? 9) _____



- A) No, it would not be unusual.
 B) Yes, it would be unusual.
 C) Not enough information given.

10) A dot plot of the speeds of a sample of 50 cars passing a policeman with a radar gun is shown below.

10) _____



What proportion of the motorists were driving above the posted speed limit of 65 miles per hour?

A) 0.02

B) 0.08

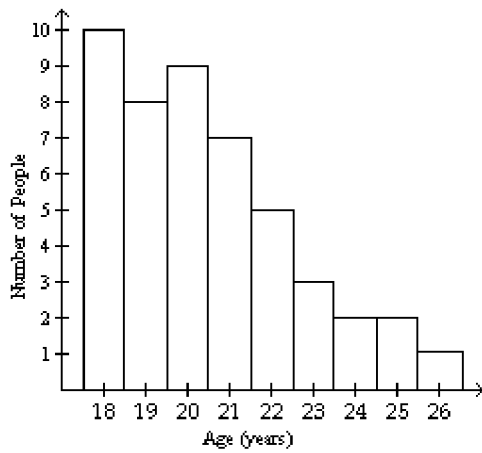
C) 1

D) 0.10

Provide an appropriate response.

11)

11) _____



How many people were 26 years old?

A) 5

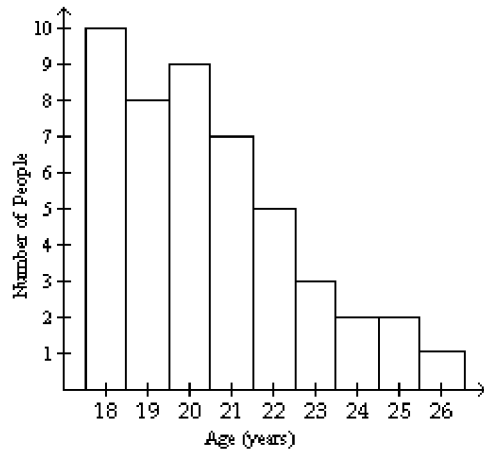
B) 1

C) 0

D) 3

12)

12) _____



How many people were 23 years old or older?

A) 3 people

B) 12 people

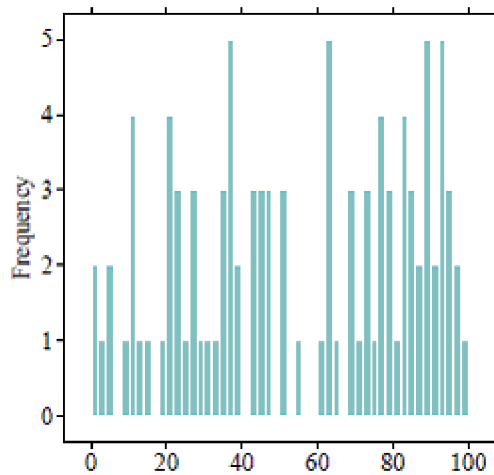
C) 8 people

D) 10 people

Solve the problem.

13) In the following histogram, what can you conclude about the bin width?

13) _____



A) The bin width is too small. We are hiding details of the distribution.

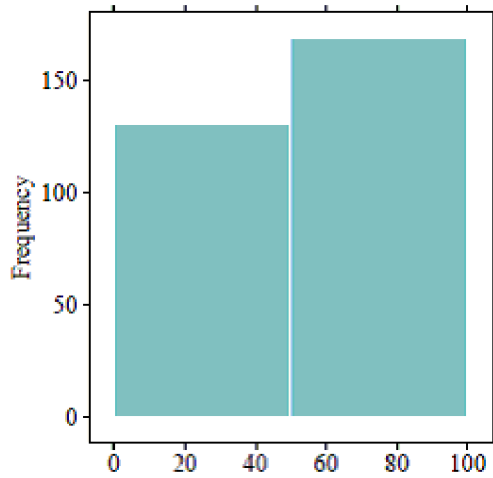
B) The bin width is too large. We are hiding details of the distribution.

C) The bin width is too large. We are given too much detail.

D) The bin width is too small. We are given too much detail.

14) In the following histogram, what can you conclude about the bin width?

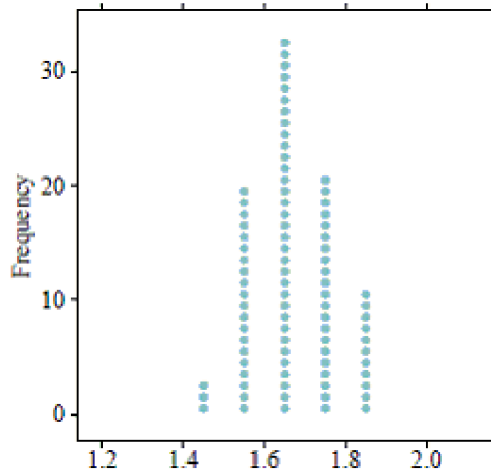
14) _____



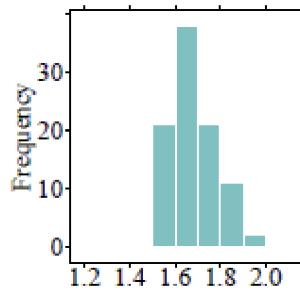
- A) The bin width is too large. We are given too much detail.
- B) The bin width is too small. We are hiding details of the distribution.
- C) The bin width is too small. We are given too much detail.
- D) The bin width is too large. We are hiding details of the distribution.

15) Which histogram represents the same data as the dotplot shown below?

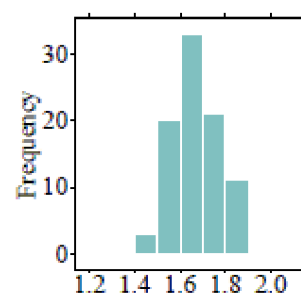
15) _____



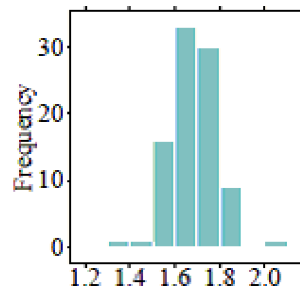
A)



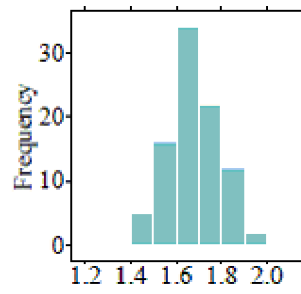
B)



C)

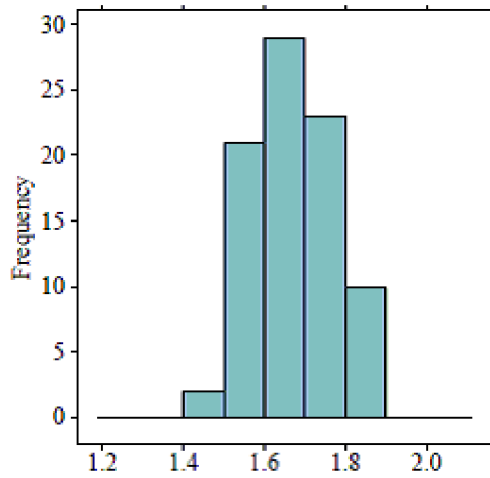


D)

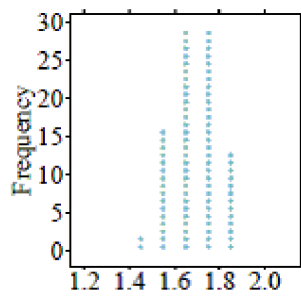


16) Which dotplot represents the same data as the histogram shown below?

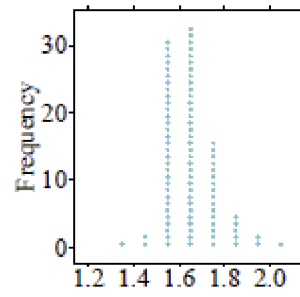
16) _____



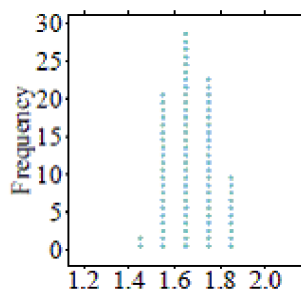
A)



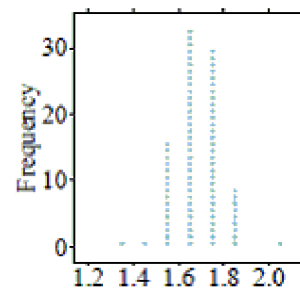
B)



C)

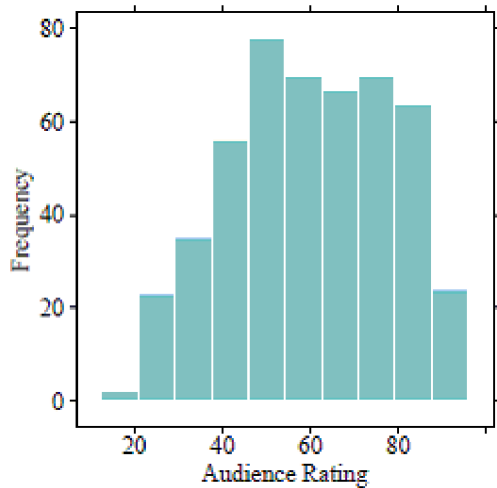


D)



- 17) The following histogram represents audience movie ratings (on a scale of 1-100) of 489 movies. What is the typical movie rating given by audiences according to this distribution?

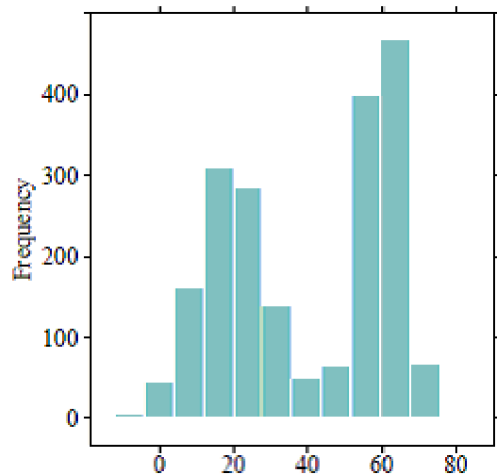
17) _____



- A) The typical value is about 70.
 B) The typical value is about 60.
 C) The typical value is about 50.
 D) The typical value is about 40.

- 18) What is the typical value for the histogram shown below?

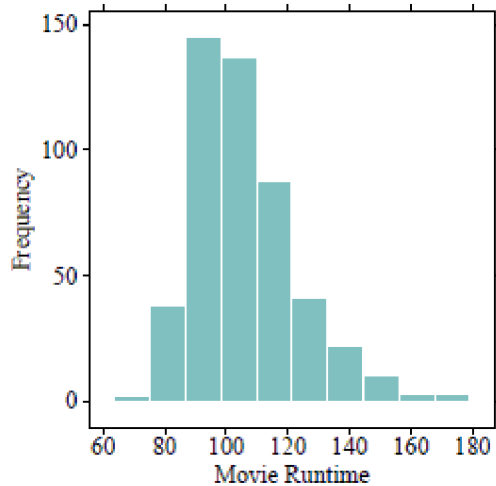
18) _____



- A) The typical value is 40 because it is the average of 20 and 60.
 B) Since the data are bimodal, a typical value cannot be found.
 C) Since the data are bimodal, there are two typical values - one is about 20 and the other is about 60.
 D) The typical value is 40 because it is the center of the distribution.

- 19) The following histogram represents the movie runtimes (length of a movie in minutes) of 489 movies. What is the typical movie runtime according to this distribution?

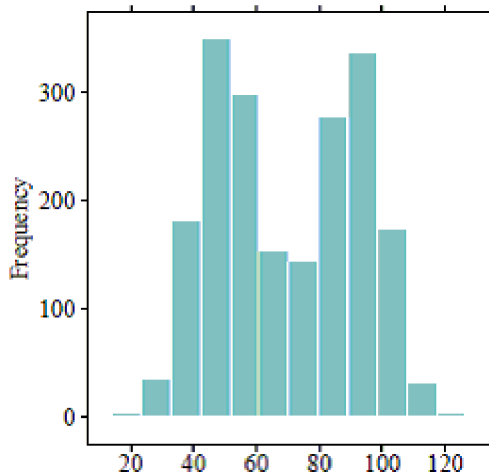
19) _____



- A) The typical value is about 120.
 B) The typical value is about 130.
 C) The typical value is about 90.
 D) The typical value is about 100.

- 20) What is the typical value for the histogram shown below?

20) _____



- A) The typical value is 70 because it is the center of the distribution.
 B) Since the data are bimodal, a typical value cannot be found.
 C) The typical value is 70 because it is the average of 50 and 90.
 D) Since the data are bimodal, there are two typical values - one is about 50 and the other is about 90.

- 21) What is the difference between a histogram and a relative frequency histogram?

21) _____

- A) A histogram uses counts to record how many observations are in a data set, and a relative histogram uses proportions.
 B) A histogram uses numbers to record how many observations are in a data set, and a relative histogram uses categories.
 C) A histogram uses proportions to record how many observations are in a data set, and a relative histogram uses counts.
 D) A histogram uses categories to record how many observations are in a data set, and a relative histogram uses counts.

22) Which of the following would likely show a bimodal distribution in a histogram?

22) _____

- A) The heights of all students in a high school band.
- B) The number of hours preschoolers plays outside.
- C) The final exam grades for an introductory statistics course.
- D) The ages of students who attend a 4-year university.

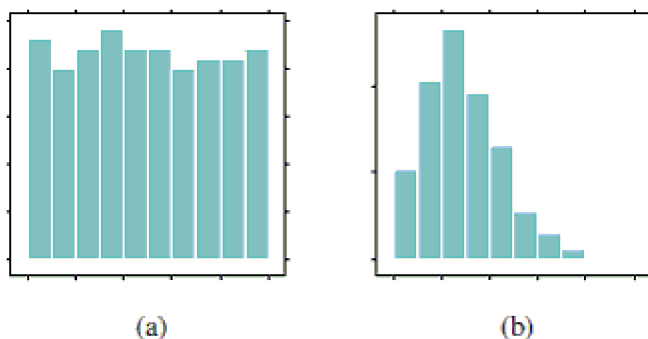
SHORT ANSWER. Write the word or phrase that best completes each statement or answers the question.

23) How is a dotplot similar to a histogram? How is it different?

23) _____

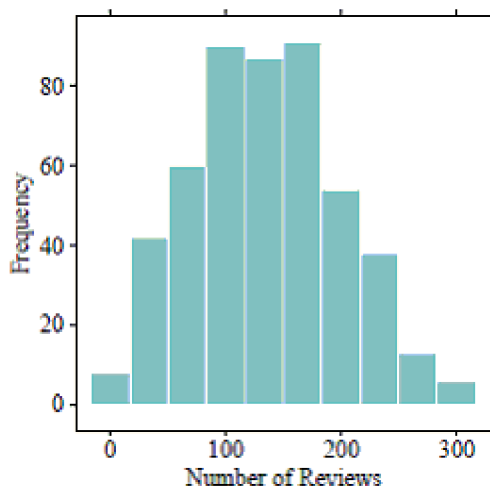
24) Below are two histograms. One corresponds to the ages at which a sample of people applied for marriage licenses; the other corresponds to the last digit of a sample of social security numbers. Which graph is which, and why?

24) _____



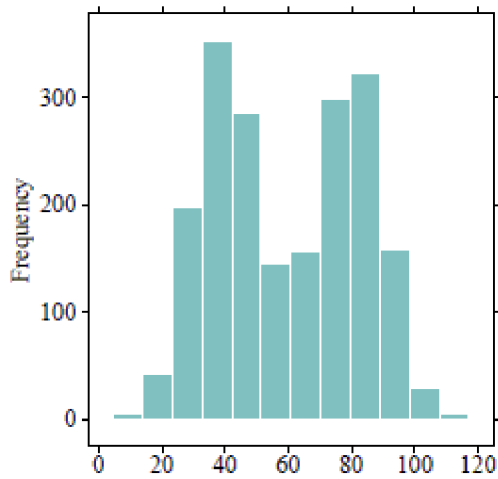
25) The following histogram represents the number of reviews a movie received on a popular website. What is the typical number of reviews a movie is expected to receive, according to this distribution? Explain your reasoning.

25) _____



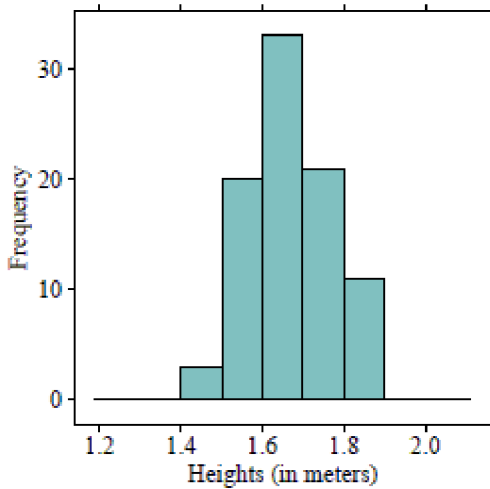
26) How would you describe the typical value for this histogram? Explain your reasoning.

26) _____



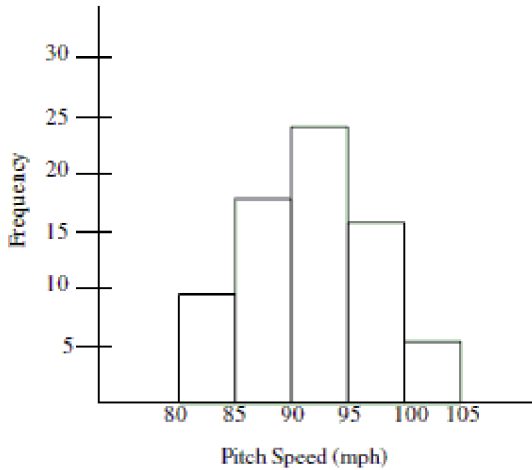
27) If you were to create a dotplot to display the same data that is represented in the following histogram, how many dots would you draw to represent heights that fall between 1.5 meters and 1.6 meters?

27) _____

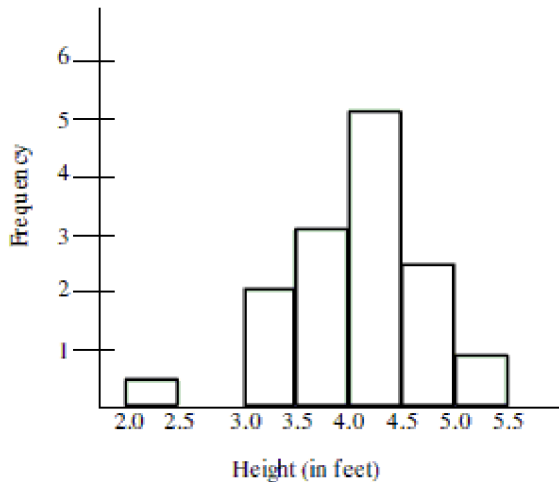


MULTIPLE CHOICE. Choose the one alternative that best completes the statement or answers the question.

- 28) The histogram shows the distribution of pitch speeds for a sample of 75 pitches for a college pitcher during one season. Which of the following statements best describes the distribution of the histogram below? 28) _____



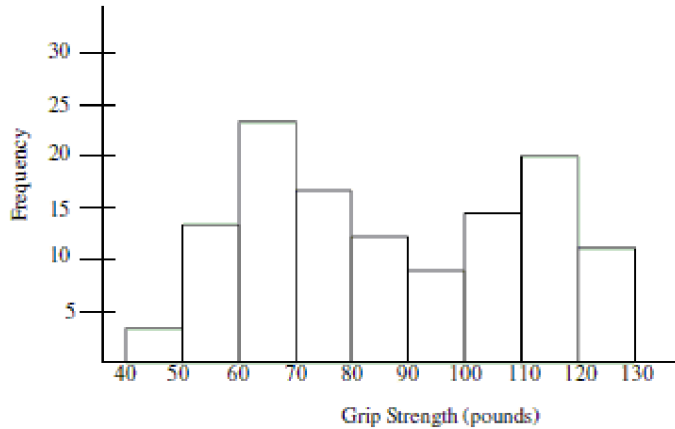
- A) The distribution has a large amount of variation which can be seen by comparing the heights of the bars in the histogram.
B) The distribution is left-skewed and shows that most of the pitches were less than 95 mph.
C) The distribution is symmetric around a pitch speed of about 93 mph.
D) The distribution is right-skewed and shows that most of the pitches were more than 90 mph.
- 29) The histogram below is the distribution of heights for a randomly selected Boy Scout troupe. Choose the statement that is true based on information from the histogram. 29) _____



- A) Although the smallest value does not fit the pattern, it should not be altogether disregarded. It is possible that the Boy Scout is 2.4 feet tall.
B) The gap between the two smallest values indicates an outlier may be present.
C) The smallest value is so extreme that it is possible that a mistake was made in recording the data.
D) All of these are true statements.

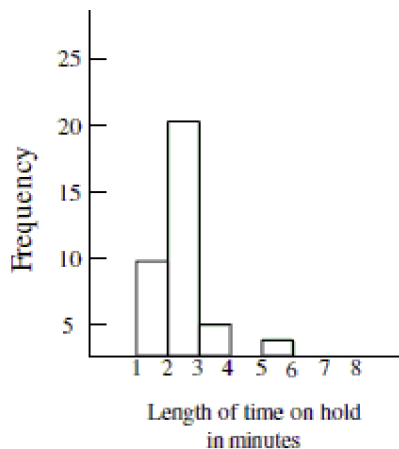
- 30) Data was collected on hand grip strength of adults. The histogram below summarizes the data. Which statement is true about the distribution of the data shown in the graph?

30) _____



- A) The graph shows evidence that two different groups may have been combined into one collection.
- B) There must have been a mistake made in data collection because the distribution should be bell-shaped.
- C) The best estimate of typical grip strength is 80-90 pounds because it is in the center of the distribution.
- D) The graph is useless because it is bimodal.
- 31) The histogram below displays the distribution of the length of time on hold, for a collection of customers, calling a repair call center. Use the histogram to select the true statement.

31) _____



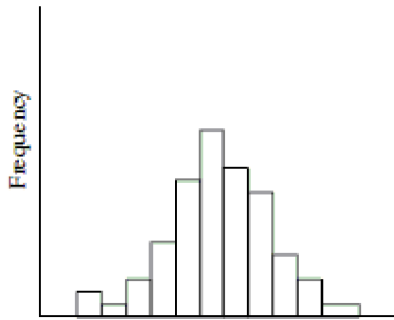
- A) The distribution is right-skewed and most callers waited on hold less than three minutes.
- B) The distribution is left-skewed and most callers waited on hold at least three minutes.
- C) The distribution is symmetrical. The number of callers who waited on hold for less than three minutes was the same as the number of callers who waited on hold for more than three minutes.
- D) The distribution shows that the data was highly variable with some callers waiting on hold as many as 20 minutes.

Choose the histogram that matches the description.

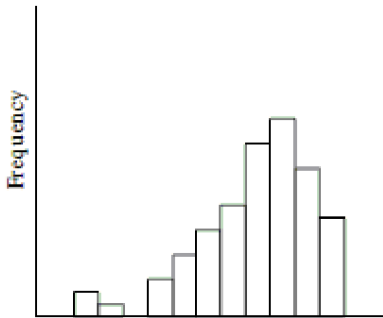
32) The distribution of heights of adult males tends to be symmetrical.

32) _____

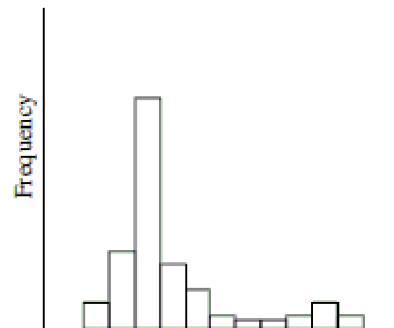
A)



B)



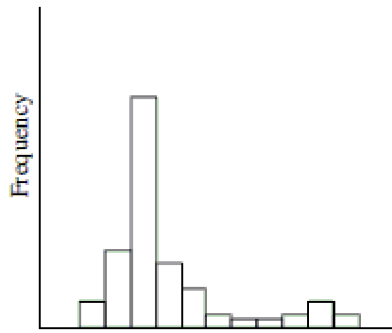
C)



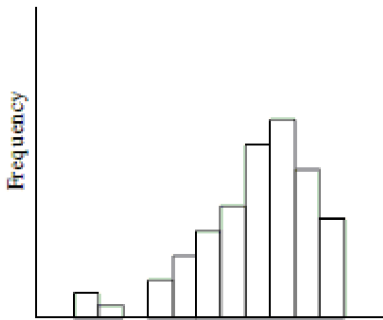
33) The distribution of the number of times individuals in the 18-24 age group log onto a social networking website during the course of a day tends to be right skewed.

33) _____

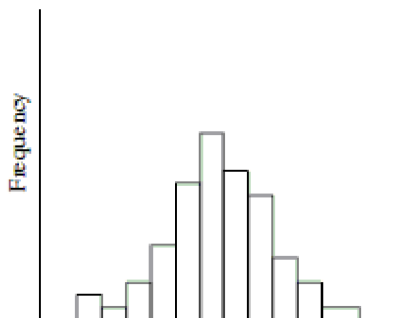
A)



B)

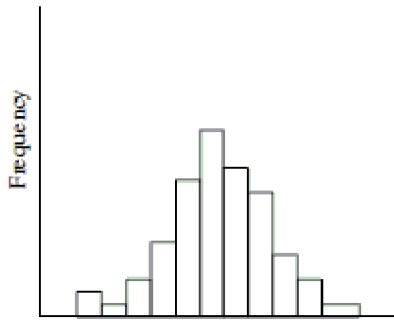


C)

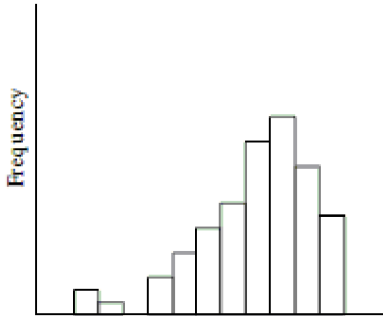


34) The distribution of test scores for a group of adults on a written driving exam following a refresher course tends to be left-skewed. 34) _____

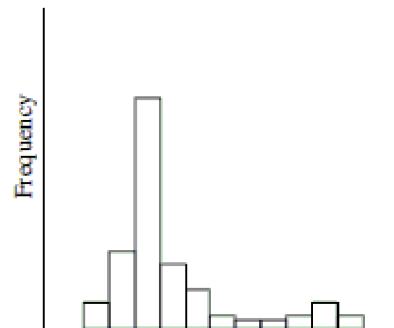
A)



B)



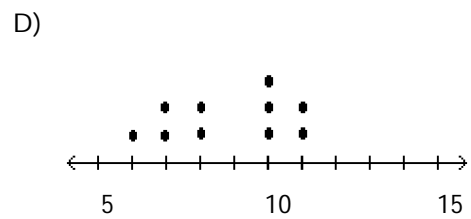
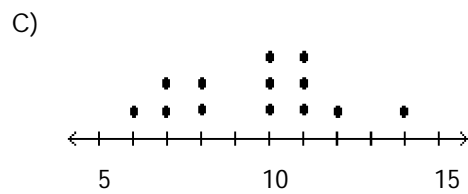
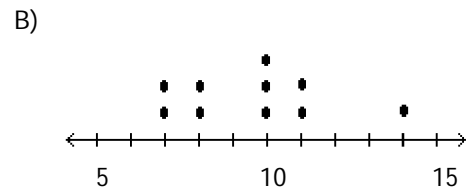
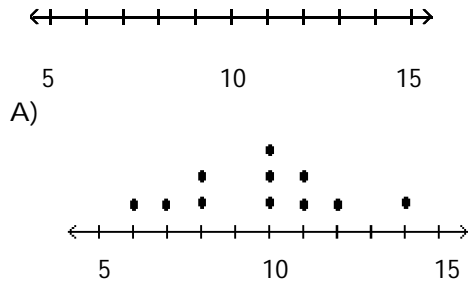
C)



Construct the dotplot for the given data.

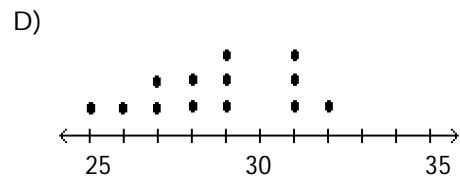
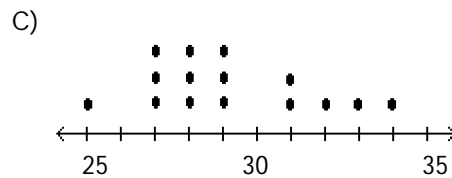
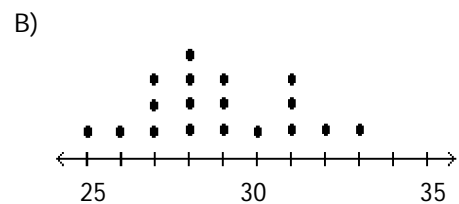
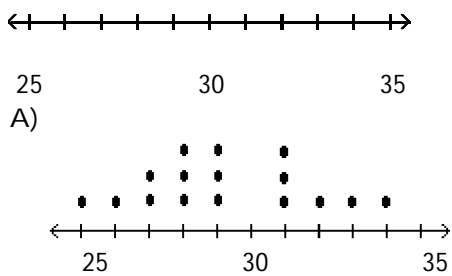
- 35) A store manager counts the number of customers who make a purchase in his store each day. The data are as follows. 35) _____

10 11 8 14 7 10 10 11 8 7



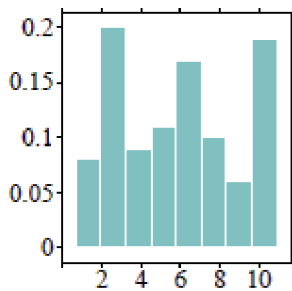
- 36) The following data represent the number of cars passing through a toll booth during a certain time period over a number of days. 36) _____

28 29 27 27 34 28 31 28 29 25 32 29 33 27 31

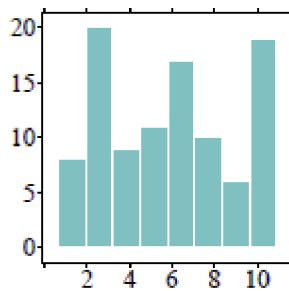


Solve the problem.

- 37) How are individual observations recorded in a dotplot, a histogram, and a stemplot? 37) _____
- A) A dotplot displays the actual values of observations. A histogram displays a dot for every observation. A stemplot uses bars to display intervals of observations.
 - B) A dotplot uses bars to display intervals of observations. A histogram displays a dot for every observation. A stemplot displays the actual values of observations.
 - C) A dotplot displays the actual values of observations. A histogram uses bars to display intervals of observations. A stemplot displays a dot for every observation.
 - D) A dotplot displays a dot for every observation. A histogram uses bars to display intervals of observations. A stemplot displays the actual values of observations.
- 38) How are individual observations recorded in a dotplot versus a stemplot? 38) _____
- A) A dotplot displays the actual values of observations. A stemplot displays a dot for every observation.
 - B) A dotplot displays a dot for every observation. A stemplot displays the actual values of observations.
 - C) A dotplot displays a dot for every observation. A stemplot uses bars to display intervals of observations.
 - D) A dotplot displays the actual values of observations. A stemplot uses bars to display intervals of observations.
- 39) When examining distributions of numerical data, what three components should you look for? 39) _____
- A) Shape, symmetry, and spread
 - B) Shape, center, and spread
 - C) Symmetry, center, and spread
 - D) Symmetry, skewness, and spread
- 40) The two histograms below display the exact same data. How do the plots differ? 40) _____



(i)



(ii)

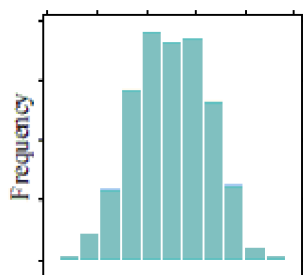
- A) Histograms (i) and (ii) are exactly the same; there are no differences between the plots.
- B) Histogram (i) uses relative frequencies to show the proportion of observations at a given value. Histogram (ii) uses frequencies to simply count the number of observations at a given value.
- C) Histograms (i) and (ii) do not display the same data because the values listed on the y-axis do not match.
- D) Histogram (i) uses frequencies to simply count the number of observations at a given value. Histogram (ii) uses relative frequencies to show the proportion of observations at a given value.

Match one of the histograms with its description.

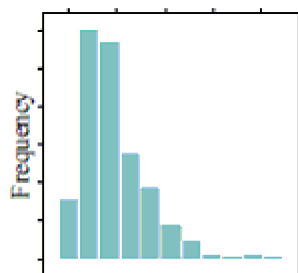
41) The distribution of scores on an easy test is displayed in histogram _____.

41) _____

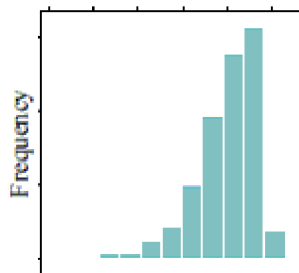
A)



B)



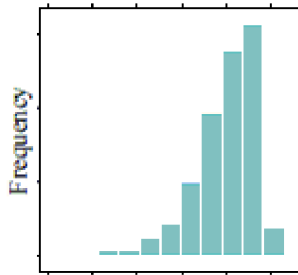
C)



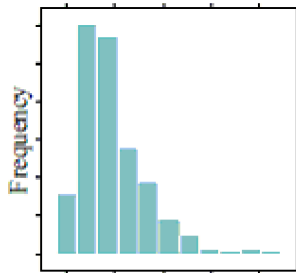
42) The distribution of household income in a large city is displayed in histogram _____.

42) _____

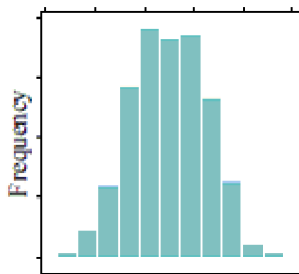
A)



B)



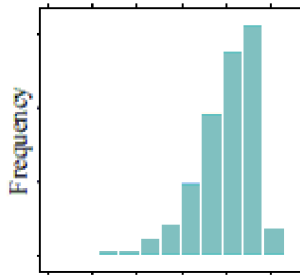
C)



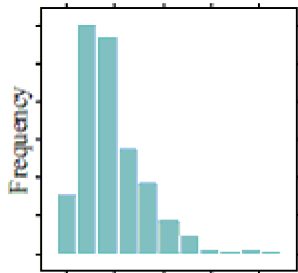
43) The distribution of female heights is displayed in histogram _____.

43) _____

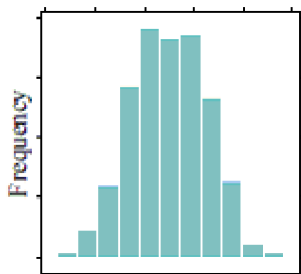
A)



B)



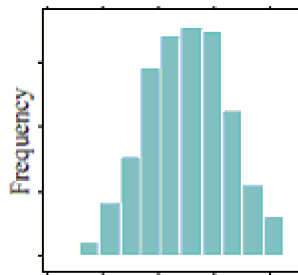
C)



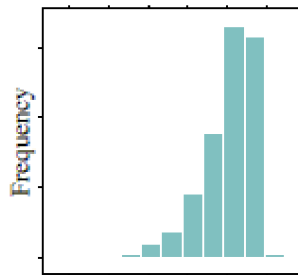
44) The distribution of test scores for a group of students who received a 15-minute study session prior to taking a test is displayed in histogram _____.

44) _____

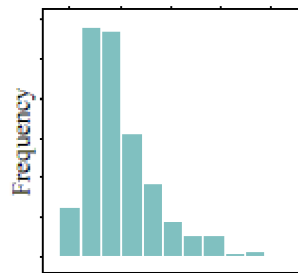
A)



B)



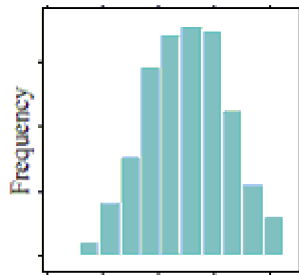
C)



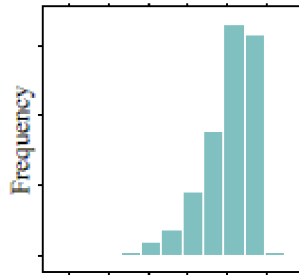
45) The distribution of male heights is displayed in histogram _____.

45) _____

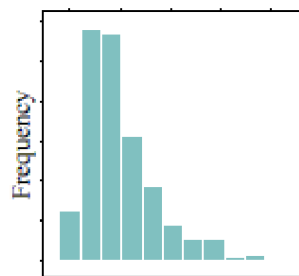
A)



B)

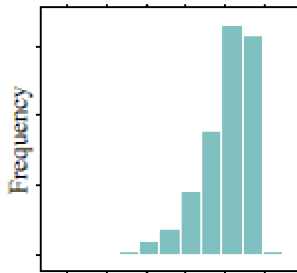


C)

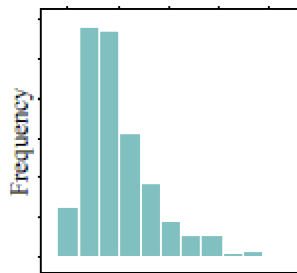


46) The distribution of the number of "friends" users of a popular social media site has is displayed in histogram _____. 46) _____

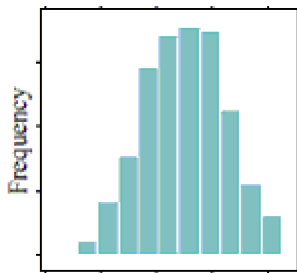
A)



B)

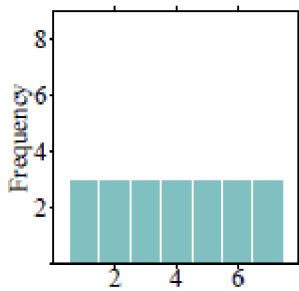


C)

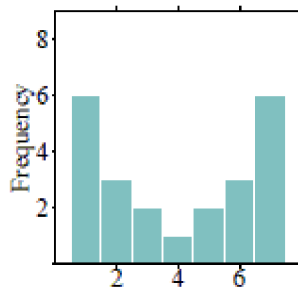


Solve the problem.

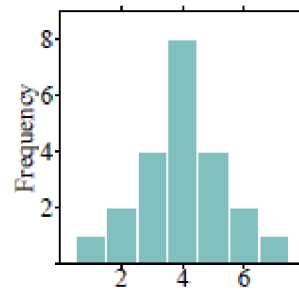
47) Order the following histograms from least to most variability. 47) _____



(i)



(ii)



(iii)

A) (iii), (i), (ii)

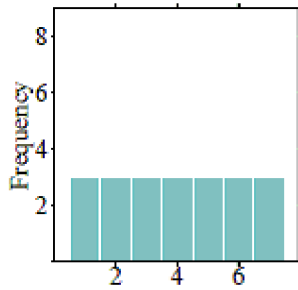
B) (i), (ii), (iii)

C) (ii), (iii), (i)

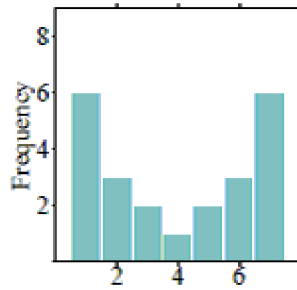
D) (ii), (i), (iii)

48) Order the following histograms from most to least variability.

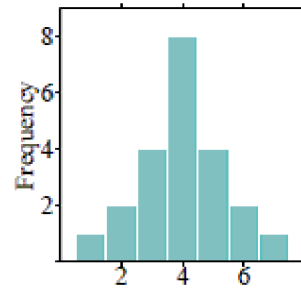
48) _____



(i)



(ii)



(iii)

A) (ii), (iii), (i)

B) (ii), (i), (iii)

C) (i), (ii), (iii)

D) (iii), (i), (ii)

49) When examining distributions of numerical data, what three components should you look for?

49) _____

A) Shape, symmetry, and spread

B) Symmetry, skewness, and spread

C) Shape, center, and spread

D) Symmetry, center, and spread

50) Which of the following would likely show a bimodal distribution in a histogram?

50) _____

A) The number of hours a college student spends on homework per night.

B) The ages of students who attend a local high school.

C) The price of college tuition, including both public and private schools.

D) The midterm exam scores for an introduction to Spanish course.

SHORT ANSWER. Write the word or phrase that best completes each statement or answers the question.

51) When examining distributions of numerical data, what three components should you try to describe?

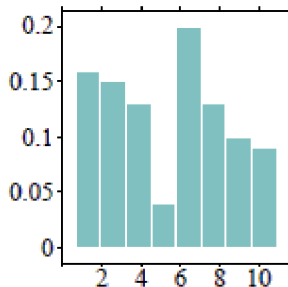
51) _____

52) Describe a scenario in which a distribution could be bimodal. Explain your reasoning.

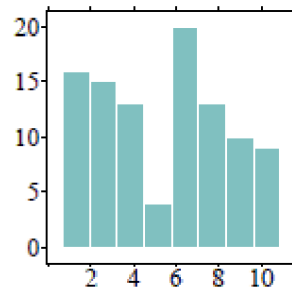
52) _____

53) The two histograms below display the exact same data. How do the plots differ?

53) _____



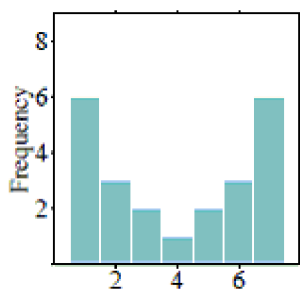
(a)



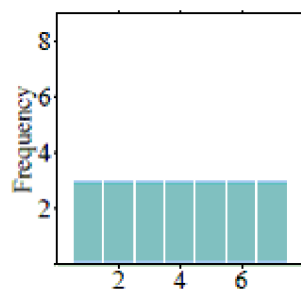
(b)

54) Order the following histograms from least to most variability. Explain your reasoning.

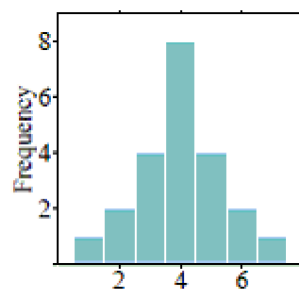
54) _____



(i)



(ii)



(iii)

What would you expect the shape of the distribution described to look like? Explain your reasoning.

55) The distribution of the household incomes in a large city.

55) _____

56) The distribution of scores on an easy test.

56) _____

57) The distribution of the time (in minutes) it takes to drive to work using the same route each day.

57) _____

MULTIPLE CHOICE. Choose the one alternative that best completes the statement or answers the question.

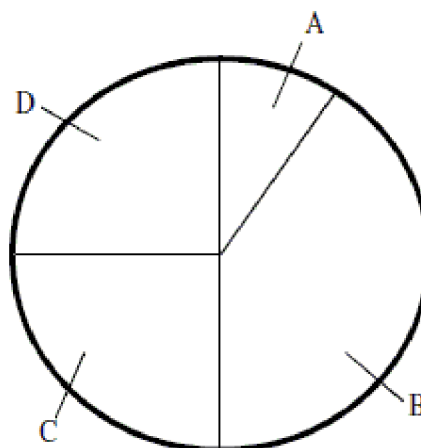
Solve the problem.

58) A group of junior high athletes was asked what team sport was their favorite. The data are summarized in the table below. On the pie chart, which area would correspond to the category "Soccer"?

58) _____

| Team Sport | Frequency |
|------------|-----------|
| Soccer | 12 |
| Volleyball | 28 |
| Basketball | 20 |
| Football | 20 |

Pie Chart: Favorite Team Sport



A) Area A

B) Area B

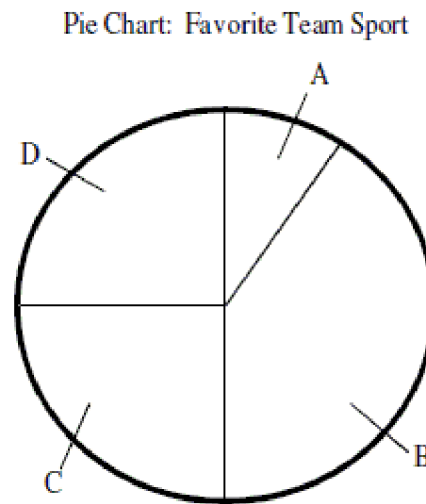
C) Area C

D) Area D

- 59) A group of junior high athletes was asked what team sport was their favorite. The data are summarized in the table below. On the pie chart, which area would correspond to the category "Volleyball"?

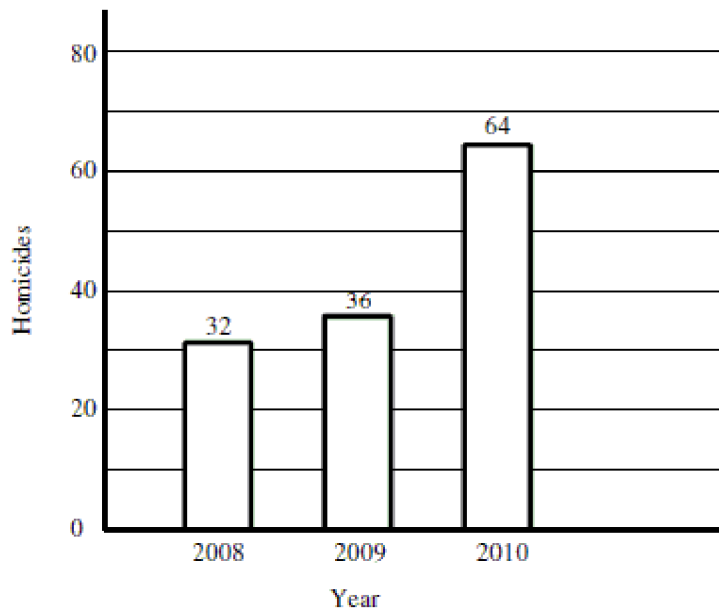
59) _____

| Team Sport | Frequency |
|------------|-----------|
| Soccer | 12 |
| Volleyball | 28 |
| Basketball | 20 |
| Football | 20 |



- A) Area A B) Area B C) Area C D) Area D
- 60) The graph below displays the number of homicides in the city of Flint, Michigan for each of the last three years. A reporter interprets this graph to mean that the number of murders in 2010 was more than twice the number of murders in 2008. Is the reporter making a correct interpretation?

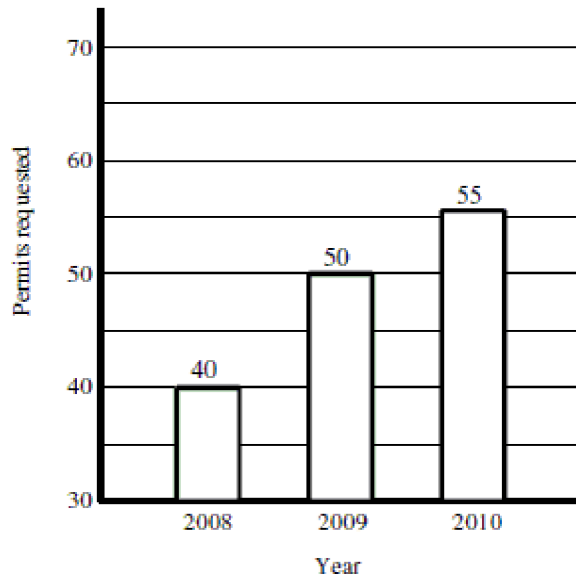
60) _____



- A) Yes. The bar for 2010 is twice the height of the bar for 2008 and the number of murders indicated above the bars confirms that murders in 2010 were more than twice the level in 2008.
- B) There is not enough information given in the graph to determine whether the reporter's interpretation is correct or not.
- C) No. The width of the bars is identical, indicating that the number of murders in 2010 is no different from 2008.

61) The graph below displays the number of applications for a concealed weapons permit in Montcalm County, Michigan, for each of three years. A reporter interprets this graph to mean that applications in 2010 are more than twice the level in 2008. Is the reporter making a correct interpretation?

61) _____



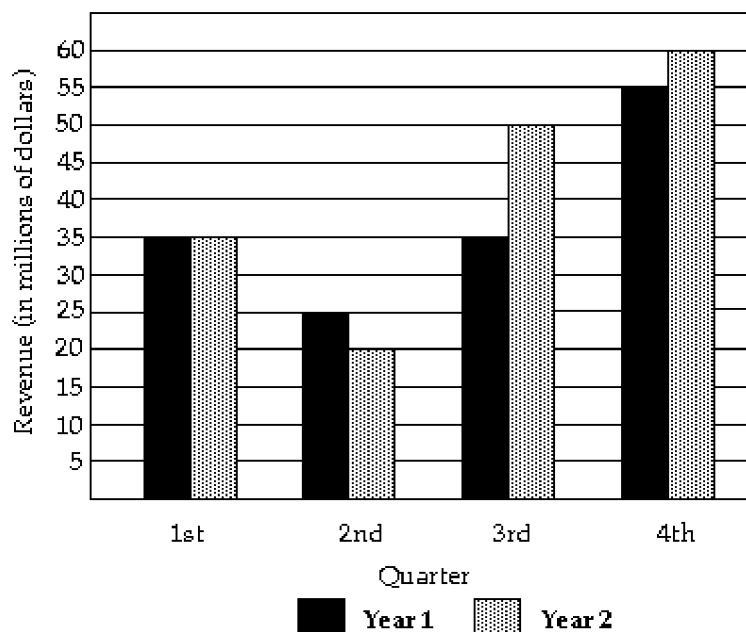
- A) Yes. The bar for 2010 is twice the height of the bar for 2008 and the number of applications indicated above the bars shows that applications in 2010 are more than twice the level in 2008.
- B) No. Although the 2010 bar is more than twice the height of the 2008, the bars do not begin at 0 applications, so the graph does not correctly represent the data. Fifty-five is not equal to two times the number of applications made in 2008.
- C) No. The width of the bars is identical, indicating that the number of applications in 2010 is no different from 2008.

62) Which of the following statements about bar graphs is true?

62) _____

- A) On a bar graph, the width of the bars has no meaning.
- B) It sometimes doesn't matter in which order you place the bars representing different categories.
- C) It is appropriate to have gaps between the bars on the graph.
- D) All of these are true for bar graphs.

The following double-bar graph illustrates the revenue for a company for the four quarters of the year for two different years. Use the graph to answer the question.



- 63) In what quarter was the revenue the greatest for Year 1?

A) third quarter
B) second quarter
C) fourth quarter
D) first quarter

63) _____
- 64) In what quarter was the revenue the least for Year 2?

A) second quarter
B) first quarter
C) third quarter
D) fourth quarter

64) _____
- 65) What was the revenue for the second quarter of Year 1?

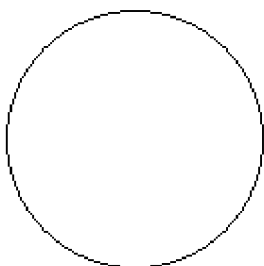
A) \$4 million
B) \$5 million
C) \$25 million
D) \$20 million

65) _____

Construct a pie chart representing the given data set.

66) The following data give the distribution of the types of houses in a town containing 31,000 houses. 66) _____

| House Type | Frequency | Percentage |
|------------|-----------|------------|
| Cape | 7,750 | 25% |
| Garrison | 12,400 | 35% |
| Split | 10,850 | 40% |

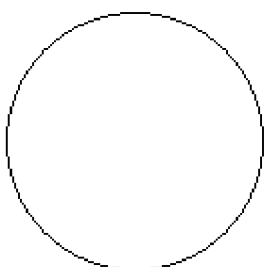


A)

B)

67) 400 movie critics rated a movie. The following data give the rating distribution. 67) _____

| Rating | Frequency | Percentage |
|-----------|-----------|------------|
| Excellent | 80 | 20% |
| Good | 200 | 50% |
| Fair | 120 | 30% |



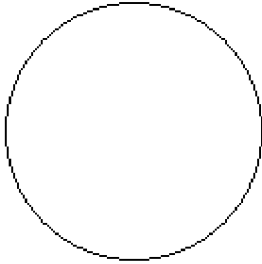
A)

B)

68) The following figures give the distribution of land (in acres) for a county containing 91,000 acres.

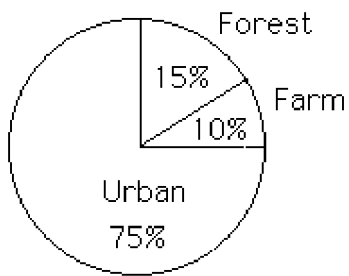
68) _____

| Land Use | Acres | Percentage |
|----------|--------|------------|
| Forest | 13,650 | 15 % |
| Farm | 9,100 | 10 % |
| Urban | 68,250 | 75 % |



A)

B)



Solve the problem.

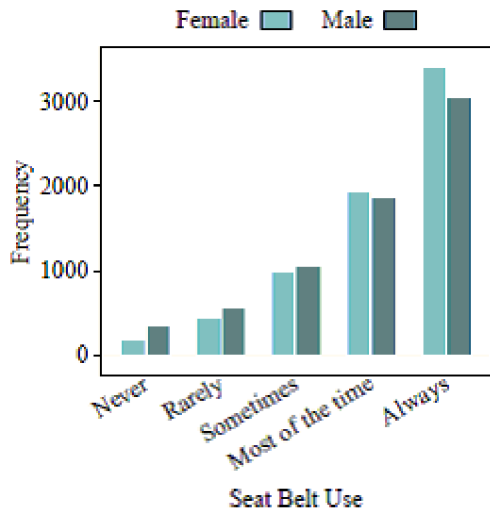
69) What is the difference between a bar chart and a histogram?

69) _____

- A) They can both be used to represent numerical data.
- B) A bar chart represents numerical data and a histogram represents categorical data.
- C) A bar chart represents categorical data and a histogram represents numerical data.
- D) They can both be used to represent categorical data.

70) Which statement below is NOT supported by the following bar chart?

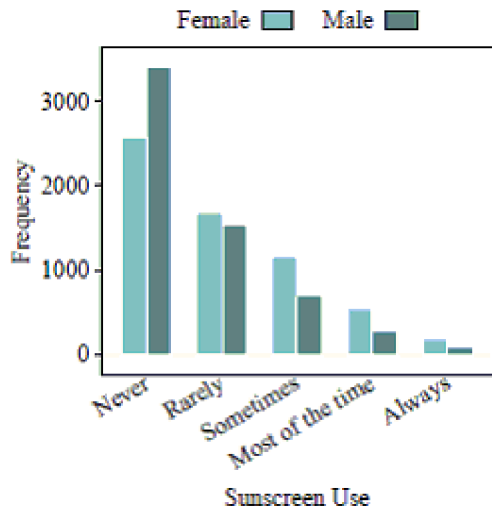
70) _____



- A) More females wear seat belts compared to males.
- B) More males wear seat belts compared to females.
- C) About 2000 people wear seat belts "sometimes."
- D) In general, people always wear seat belts.

71) Which statement below is NOT supported by the following bar chart?

71) _____



- A) About 50% of males never wear sunscreen.
- B) Very few people, in general, always wear sunscreen.
- C) More males wear sunscreen than females.
- D) More females wear sunscreen than males.

72) What does it mean to find the mode of a bar chart?

72) _____

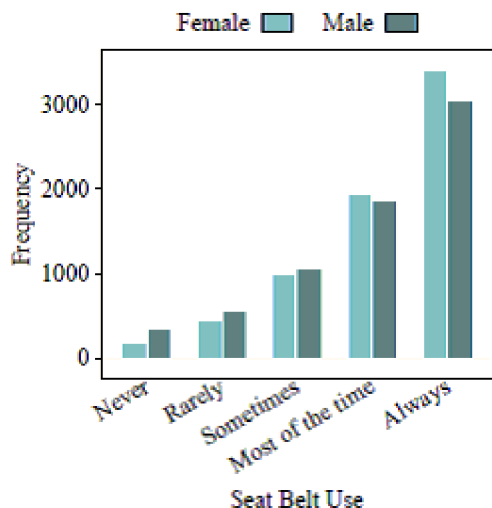
- A) The mode can be found by adding up the total number of categories.
- B) The mode can be found by adding up the total number of observations and dividing by the number of categories.
- C) The mode can be found by finding the bar, or category, with the most observations.
- D) You cannot find a mode for categorical data. Modes are only used with numerical data.

SHORT ANSWER. Write the word or phrase that best completes each statement or answers the question.

73) What is the difference between a bar chart and a histogram? 73) _____

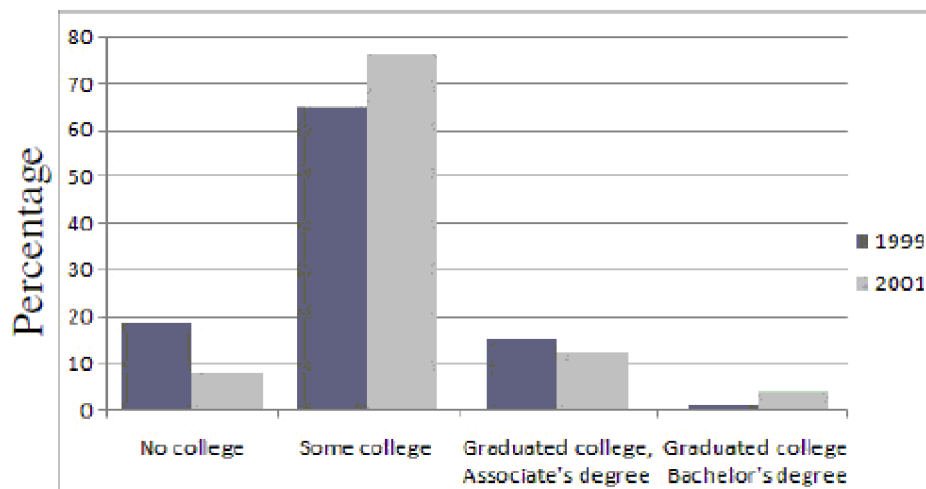
74) What does it mean to find the mode of a bar chart? 74) _____

75) Using the following bar chart, what can you say about the difference in seat belt use for males versus females? 75) _____



MULTIPLE CHOICE. Choose the one alternative that best completes the statement or answers the question.

The following side-by-side bar graph shows the level of post-secondary education achieved ten years after high school for graduates from the years 1999 and 2001. Use the bar graph to answer the question.



76) What was the most common response for 1999? 76) _____
 A) Some College B) No College
 C) Graduated College, Associate's Degree D) Graduated College, Bachelor's Degree

77) In which category was there more variability? 77) _____
 A) No College B) Graduated College, Bachelor's Degree
 C) Some College D) Graduated College, Associate's Degree

78) What is the mode response for 2001?

- A) Some College
- C) No College

- B) Graduated College, Associate's Degree
- D) Graduated College, Bachelor's Degree

78) _____

79) Which category shows the least amount of variation between years?

- A) Graduated College, Bachelor's Degree
- C) Some College

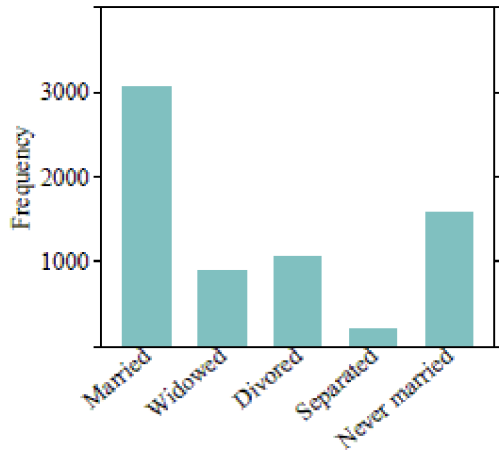
- B) Graduated College, Associate's Degree
- D) No College

79) _____

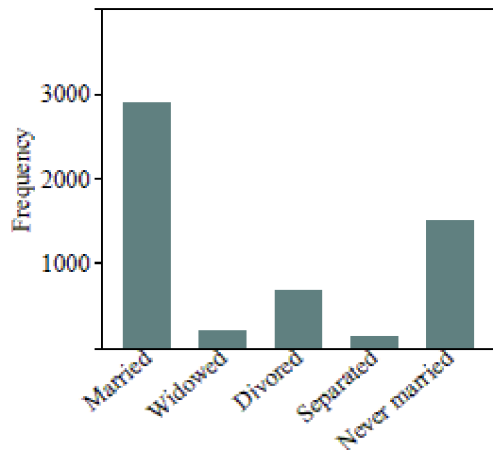
Solve the problem.

80) The bar charts below depict the marital statuses of Americans, separated by gender. Which bar chart shows more variability in marital status? Why?

80) _____



Marital Status - Females

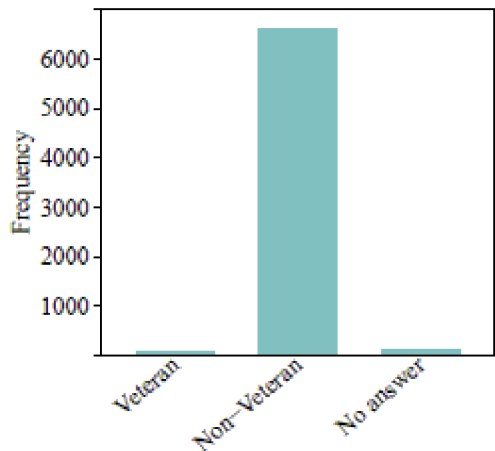


Marital Status - Males

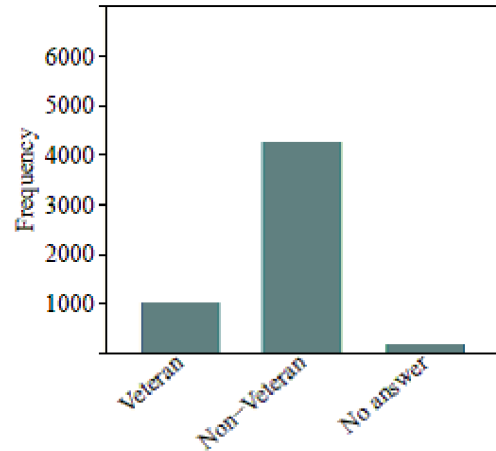
- A) The female bar chart shows more variability because there are more observations in the different categories than there are for males.
- B) The male bar chart shows more variability because there are more observations in the different categories than there are for females.
- C) The male bar chart shows more variability because because many of the observations fall into one category ("Married").
- D) The female bar chart shows more variability because many of the observations fall into one category ("Married").

81) The bar charts below depict the veteran statuses of Americans, separated by gender. Which bar chart has more variability in veteran status? Why?

81) _____



US Military Veteran Status – Females



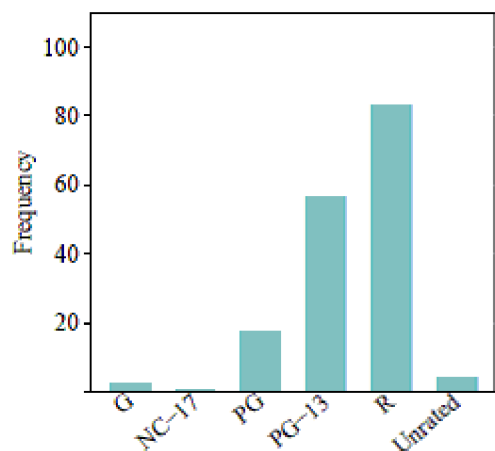
US Military Veteran Status – Males

- A) The male bar chart shows more variability because many of the observations fall into one category ("Non-Veteran").
- B) The male bar chart shows more variability because there are more observations in the different categories than there are for females.
- C) The female bar chart shows more variability because there are more observations in the different categories than there are for males.
- D) The female bar chart shows more variability because many of the observations fall into one category ("Non-Veteran").

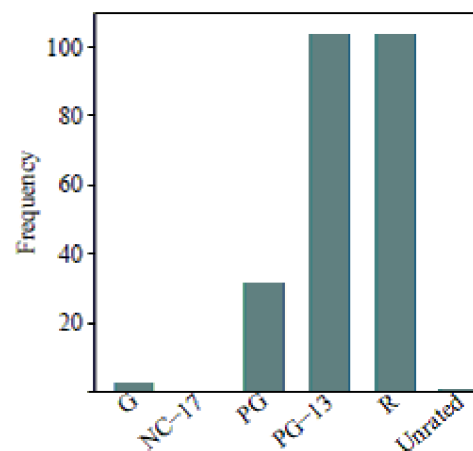
SHORT ANSWER. Write the word or phrase that best completes each statement or answers the question.

82) The bar charts below depict the MPAA movie ratings of 489 movies, separated by high and low critic scores. Which bar chart shows more variability in MPAA movie ratings? Why?

82) _____



MPAA Movie Rating – High Critic Scores



MPAA Movie Rating – Low Critic Scores

MULTIPLE CHOICE. Choose the one alternative that best completes the statement or answers the question.

- 83) Parking at a university has become a problem. University administrators are interested in determining the average time it takes a student to find a parking spot. An administrator inconspicuously followed 130 students and recorded how long it took each of them to find a parking spot. Which of the following types of graphs should NOT be used to display information concerning the students parking times? 83) _____
- A) pie chart B) histogram C) stemplot D) dotplot

A large state university conducted a survey among their students and received 400 responses. The survey asked the students to provide the following information:

*** Age**

*** Year in School (Freshman, Sophomore, Junior, Senior)**

*** Major**

- 84) What type of graph would you use to describe the variable Major? 84) _____
- A) A bar chart because Major is a numerical variable.
B) A histogram because Major is a numerical variable.
C) A histogram because Major is a categorical variable.
D) A bar chart because Major is a categorical variable.
- 85) What type of graph would you use to describe the variables Major and Year in School? 85) _____
- A) A side-by-side histogram should be used since these are two categorical variables.
B) A side-by-side bar chart should be used since these are two categorical variables.
C) A side-by-side histogram should be used since these are two numerical variables.
D) A side-by-side bar chart should be used since these are two numerical variables.

A large state university conducted a survey among their students and received 300 responses. The survey asked the students to provide the following information:

*** Age**

*** Year in School (Freshman, Sophomore, Junior, Senior)**

*** Gender**

*** GPA**

- 86) What type of graph would you use to describe the variable Age? 86) _____
- A) A histogram because Age is a categorical variable.
B) A bar chart because Age is a numerical variable.
C) A histogram because Age is a numerical variable.
D) A bar chart because Age is a categorical variable.
- 87) What type of graph would you use to describe the variables Gender and Year in School? 87) _____
- A) A side-by-side histogram should be used since these are two categorical variables.
B) A side-by-side bar chart should be used since these are two categorical variables.
C) A side-by-side histogram should be used since these are two numerical variables.
D) A side-by-side bar chart should be used since these are two numerical variables.

SHORT ANSWER. Write the word or phrase that best completes each statement or answers the question.

A large state university conducted a survey among their students and received 400 responses. The survey asked the students to provide the following information:

* Age

* Year in School (Freshman, Sophomore, Junior, Senior)

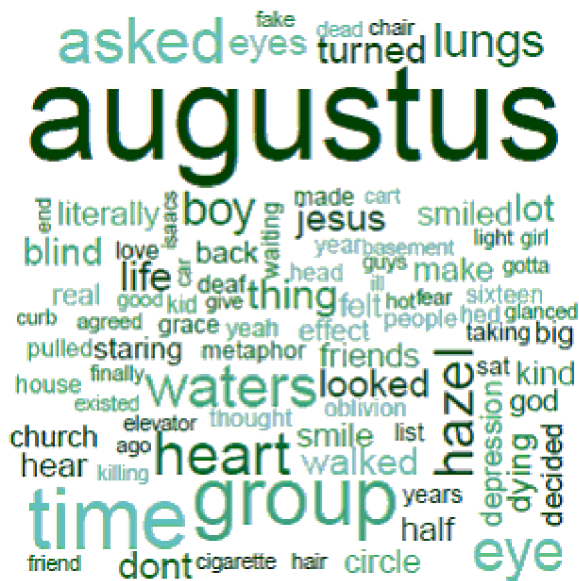
* Gender

88) What type of graph would you use to describe the variable Year in School? Explain your reasoning. 88) _____

89) What type of graph would you use to describe the variables Gender and Year in School? Explain your reasoning. 89) _____

MULTIPLE CHOICE. Choose the one alternative that best completes the statement or answers the question.

A word cloud was created using the first chapter of John Green's The Fault in Our Stars. (Note that filler words such as "the," "a/an," and "and" were excluded from the plot.)



90) According to the word cloud, what is the most common word in the first chapter of The Fault in Our Stars? Why? 90) _____

- A) The most common word is "thing" because it appears in the middle of the cloud.
- B) The most common word is "augustus" because it is the largest in size.
- C) The most common word is "hazel" because that is the narrator's name.
- D) The most common word is "augustus" because he is a main character in the story.

91) What information is NOT explicitly portrayed in the word cloud? 91) _____

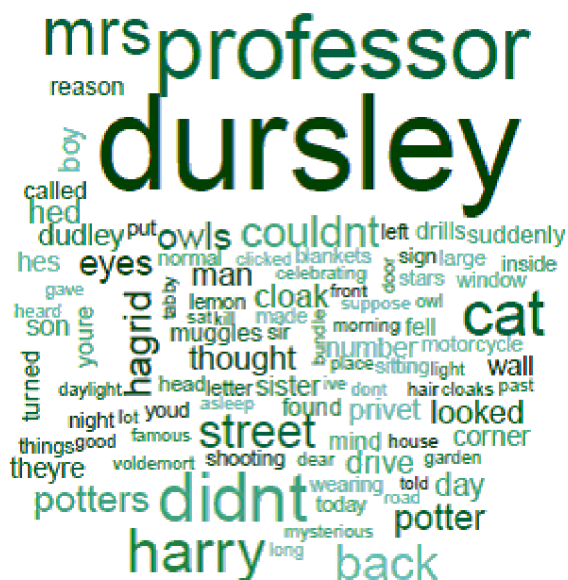
- A) The number of times each word occurs.
- B) The words that occur most frequently in the chapter.
- C) The specific word that occurs most often.

A word cloud was created using the first chapter of Lewis Carroll's Alice's Adventures in Wonderland. (Note that filler words such as "the," "a/an," and "and" were excluded from the plot.)



- 92) According to the word cloud, what is the most common word in the first chapter of Alice's Adventures in Wonderland? Why? 92) _____
- A) The most common word is "garden" because it appears in the middle of the cloud.
 - B) The most common word is "alice" because it is the largest in size.
 - C) The most common word is "alice" because she is a main character in the story.
 - D) The most common word is "marked" because it appears at the top of the cloud.
- 93) What information is NOT explicitly portrayed in the word cloud? 93) _____
- A) The number of times each word occurs.
 - B) The specific word that occurs most often.
 - C) The words that occur most frequently in the chapter.

A word cloud was created using the first chapter of J.K. Rowling's Harry Potter and the Sorcerer's Stone. (Note that filler words such as "the," "a/an," and "and" were excluded from the plot.)



- 40

Answer Key

Testname: UNTITLED12

- 1) A
- 2) D
- 3) A
- 4) A
- 5) C
- 6) D
- 7) C
- 8) D
- 9) B
- 10) B
- 11) B
- 12) C
- 13) D
- 14) D
- 15) B
- 16) C
- 17) B
- 18) C
- 19) D
- 20) D
- 21) A
- 22) A
- 23) A dotplot and a histogram both show the overall shape of a distribution. They both can help determine a distribution's shape, center, and spread. They differ in terms of appearance in only one way. A dotplot displays a dot to represent each observation in the data, while a histogram uses bars to display intervals of observations.
- 24) Histogram (a) displays the last digits of social security numbers because all of the values are mostly equally likely. Since the last digit of social security numbers are created randomly, we would expect any digit between 0 and 9 to show up just as often as another digit. Histogram (b) displays the ages at which a sample of people applied for a marriage license. Since most people get married in their early to mid-twenties, but there are also people who wait to get married until a later age, we would expect the distribution to be right-skewed.
- 25) The typical number of reviews a movie will receive is about 130. We know this because the distribution is centered around the value 130 on the x-axis.
- 26) Since the data are bimodal, there are two typical values - one is about 40 and the other is about 80.
- 27) About 20 dots should be drawn because there are about 20 people whose heights fall between 1.5 meters and 1.6 meters, as shown by the frequency value on the y-axis.
- 28) C
- 29) D
- 30) A
- 31) A
- 32) A
- 33) A
- 34) B
- 35) B
- 36) C
- 37) D
- 38) B
- 39) B
- 40) B
- 41) C
- 42) B

Answer Key

Testname: UNTITLED12

- 43) C
- 44) B
- 45) A
- 46) B
- 47) A
- 48) B
- 49) C
- 50) C
- 51) Shape, center, and spread of the data.
- 52) Answers may vary. Some examples include: (1) The price of college tuition, including both public and private schools (the different types of colleges would create two modes - private colleges would most likely have higher tuition costs compared to public schools). (2) The heights of all students at a high school (the different genders would create two modes - males are typically taller than females).
- 53) Histogram (a) uses frequencies to simply count the number of observations at a given value. Histogram (b) uses relative frequencies to show the proportion of observations at a given value.
- 54) Least to most variability: (iii), (ii), (i). Histogram (iii) has the least variability because it has more points that are close to the center of the distribution. Histogram (i) has the most variability because it has more points that are far away from the center of the distribution.
- 55) The distribution of incomes would most likely be right-skewed because most people earn middle-class salaries, but the very wealthy people are likely to earn incomes much higher than average.
- 56) The distribution of scores on an easy test would most likely be left-skewed because most test-takers will do well on the test, and a few will still do poorly.
- 57) The distribution of the time it takes to drive to work using the same route each day should be roughly symmetric because the time you leave your house is probably the same each day. The commute times will be very similar on a day-to-day basis.
- 58) A
- 59) B
- 60) A
- 61) B
- 62) D
- 63) C
- 64) A
- 65) C
- 66) B
- 67) B
- 68) A
- 69) C
- 70) B
- 71) C
- 72) C
- 73) A bar chart represents a categorical variable and a histogram represents a numerical variable.
- 74) The mode can be found by finding the bar, or category, with the most observations. It will be the highest bar in the plot.
- 75) Answers may vary. Some examples include: (1) In general, people always wear seat belts. (2) Females wear seatbelts more than males. (3) About the same number of males and females report wearing seat belts "sometimes."
- 76) A
- 77) A
- 78) A
- 79) D
- 80) A

Test Bank for Introductory Statistics 2nd Edition by Gould

Full Download: <http://downloadlink.org/product/test-bank-for-introductory-statistics-2nd-edition-by-gould/>

Answer Key

Testname: UNTITLED12

- 81) B
- 82) The "high critic scores" bar chart shows more variability because there are more observations in the different categories than there are for the "low critic scores."
- 83) A
- 84) D
- 85) B
- 86) C
- 87) B
- 88) A bar chart because Year in School is a categorical variable.
- 89) A side-by-side bar chart should be used since these are two categorical variables.
- 90) B
- 91) A
- 92) B
- 93) A
- 94) The most common word is "dursley" because it is the largest in size.
- 95) No. A word cloud can only tell us what words are the most common, but it cannot tell us exactly how many times a specific word appeared in the text.