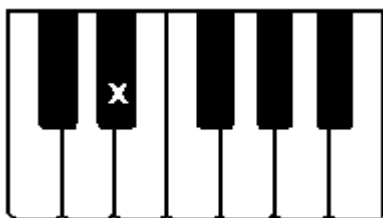


CHAPTER 2—THE KEYBOARD

MULTIPLE CHOICE

1. What is a possible letter name of the note marked with an "x"?

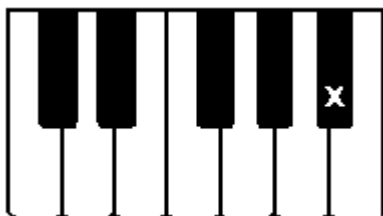


- a. C#
- b. D#
- c. D
- d. F
- e. G

ANS: B

PTS: 1

2. What is the letter name of the note one half step above the note marked with an "x"?



- a. Ab
- b. A
- c. C
- d. Bbb
- e. B

ANS: E

PTS: 1

3. The notes in this image depict:

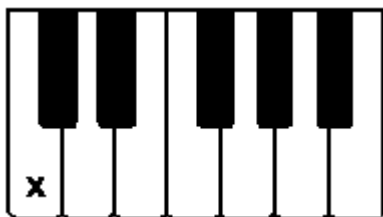


- a. a diatonic half step from A to Ab
- b. a chromatic half step from A to Ab
- c. a diatonic half step from C to Cb
- d. a chromatic half step from C to Cb
- e. a chromatic half step from A to A#

ANS: B

PTS: 1

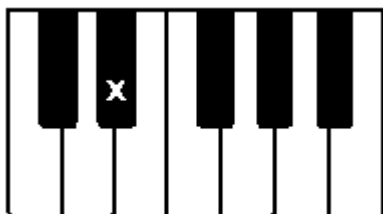
4. What is a possible letter name of the note marked with an "x"?



- a. Cb
- b. B
- c. C
- d. F
- e. G

ANS: C PTS: 1

5. What is the letter name of the note one half step above the note marked with an "x"?



- a. E
- b. E#
- c. F
- d. D
- e. Db

ANS: A PTS: 1

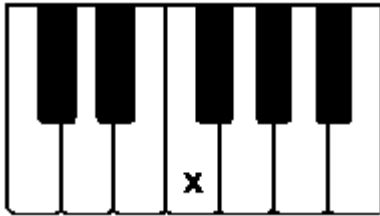
6. The notes in this image depict:



- a. a diatonic half step from F to Gb
- b. a chromatic half step from F to Gb
- c. a chromatic half step from D to Eb
- d. a diatonic half step from D to Eb
- e. a diatonic half step from D to E#

ANS: D PTS: 1

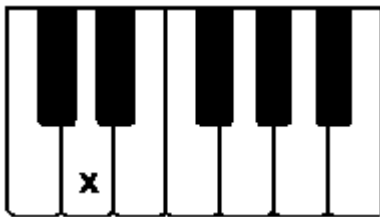
7. What is a possible letter name of the note marked with an "x"?



- a. G
- b. F
- c. A
- d. Gb
- e. F#

ANS: B PTS: 1

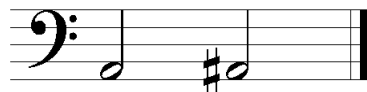
8. What is the letter name of the note one half step below the note marked with an "x"?



- a. D
- b. D#
- c. Eb
- d. E
- e. Db

ANS: E PTS: 1

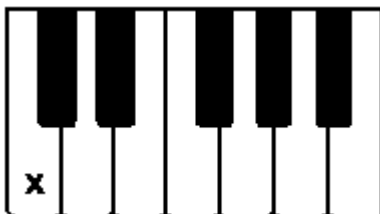
9. The notes in this image depict:



- a. a chromatic half step from A to Ab
- b. a chromatic half step from F to F#
- c. a diatonic half step from A to A#
- d. a chromatic half step from A to A#
- e. a diatonic half step from F to F#

ANS: D PTS: 1

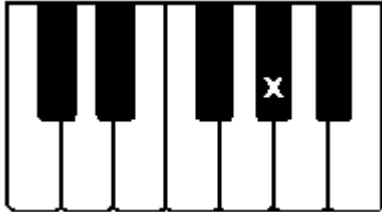
10. What is the letter name of the note one whole step above the note marked with an "x"?



- a. C
- b. Bb
- c. B
- d. D
- e. C#

ANS: D PTS: 1

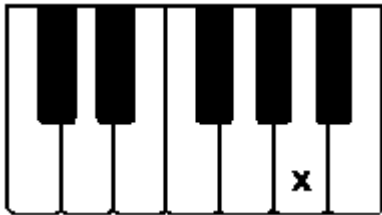
11. What is a possible letter name of the note marked with an "x"?



- a. A
- b. C
- c. Ab
- d. Bb
- e. B

ANS: C PTS: 1

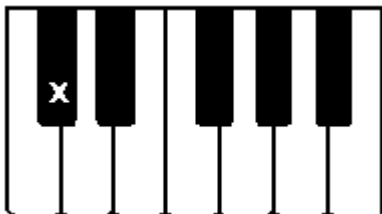
12. What is the letter name of the note one whole step below the note marked with an "x"?



- a. B
- b. C
- c. G
- d. F
- e. Ab

ANS: C PTS: 1

13. What is a possible letter name of the note marked with an "x"?



- a. Db
- b. D

- c. C
- d. B
- e. Eb

ANS: A PTS: 1

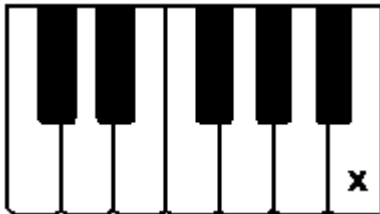
14. The notes in this image depict:



- a. a diatonic half step from F to E
- b. a chromatic half step from F to E
- c. a diatonic whole step from F to E
- d. a chromatic half step from D to C
- e. a diatonic half step from D to C

ANS: A PTS: 1

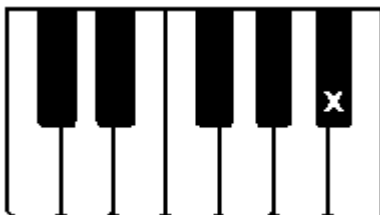
15. What is the letter name of the note one half step below the note marked with an "x"?



- a. A
- b. B
- c. C
- d. Bb
- e. D

ANS: D PTS: 1

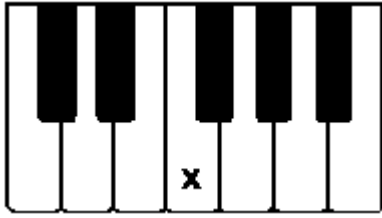
16. What is a possible letter name of the note marked with an "x"?



- a. Ab
- b. Gb
- c. B#
- d. Bb
- e. C

ANS: D PTS: 1

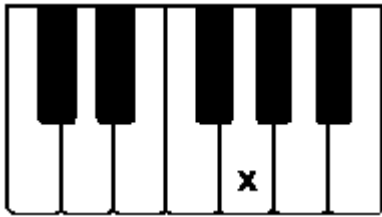
17. What is the letter name of the note one whole step below the note marked with an "x"?



- a. F#
- b. E
- c. G
- d. F
- e. Eb

ANS: E PTS: 1

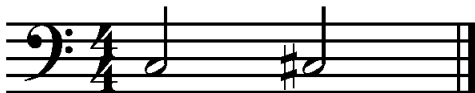
18. What is a possible letter name of the note marked with an "x"?



- a. G
- b. F
- c. C
- d. A
- e. B

ANS: A PTS: 1

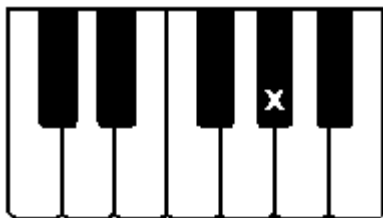
19. The notes in this image depict:



- a. a diatonic half step from C to C#
- b. a chromatic half step A to A#
- c. a diatonic half step from A to A#
- d. a chromatic half step from C to C#
- e. a diatonic half step from C to Cb

ANS: D PTS: 1

20. What is the letter name of the note one half step above the note marked with an "x"?



- a. A
- b. Ab
- c. G#
- d. G
- e. Gb

ANS: A

PTS: 1